

Combat Casualty Care Manual

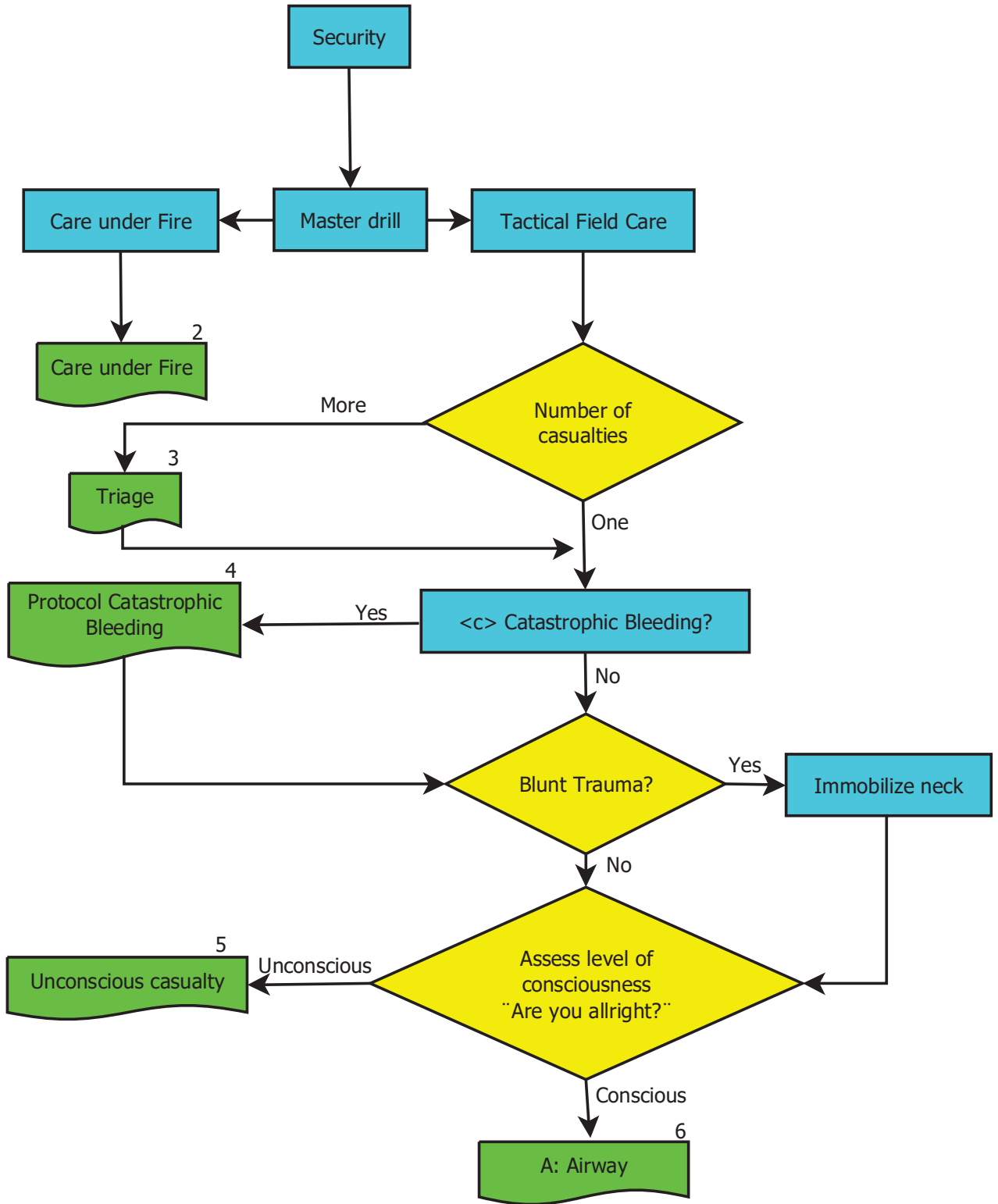


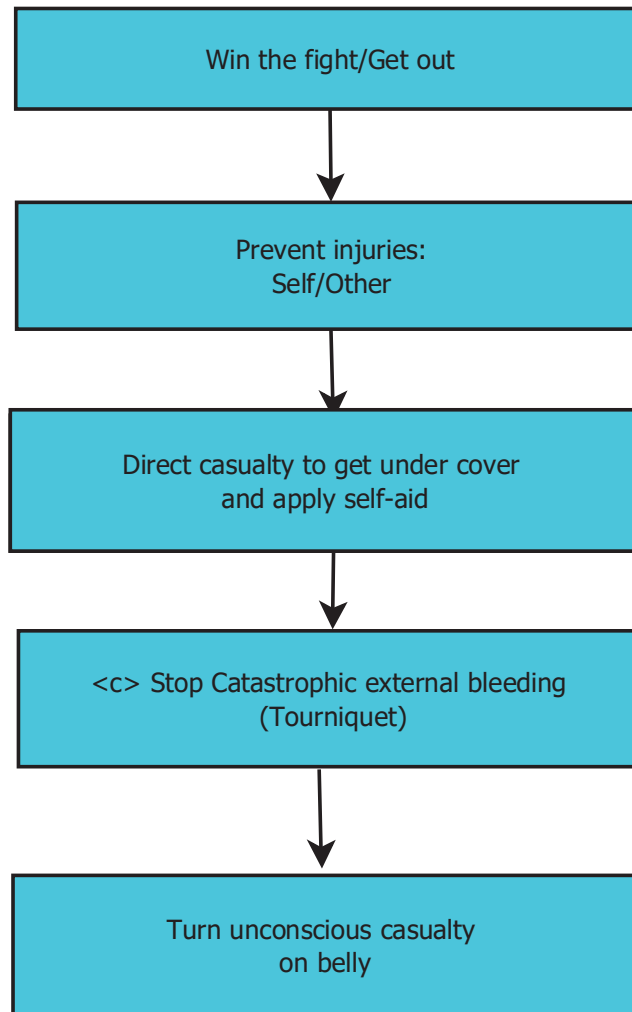
Flowcharts
CIOMR GUIDELINE

2018

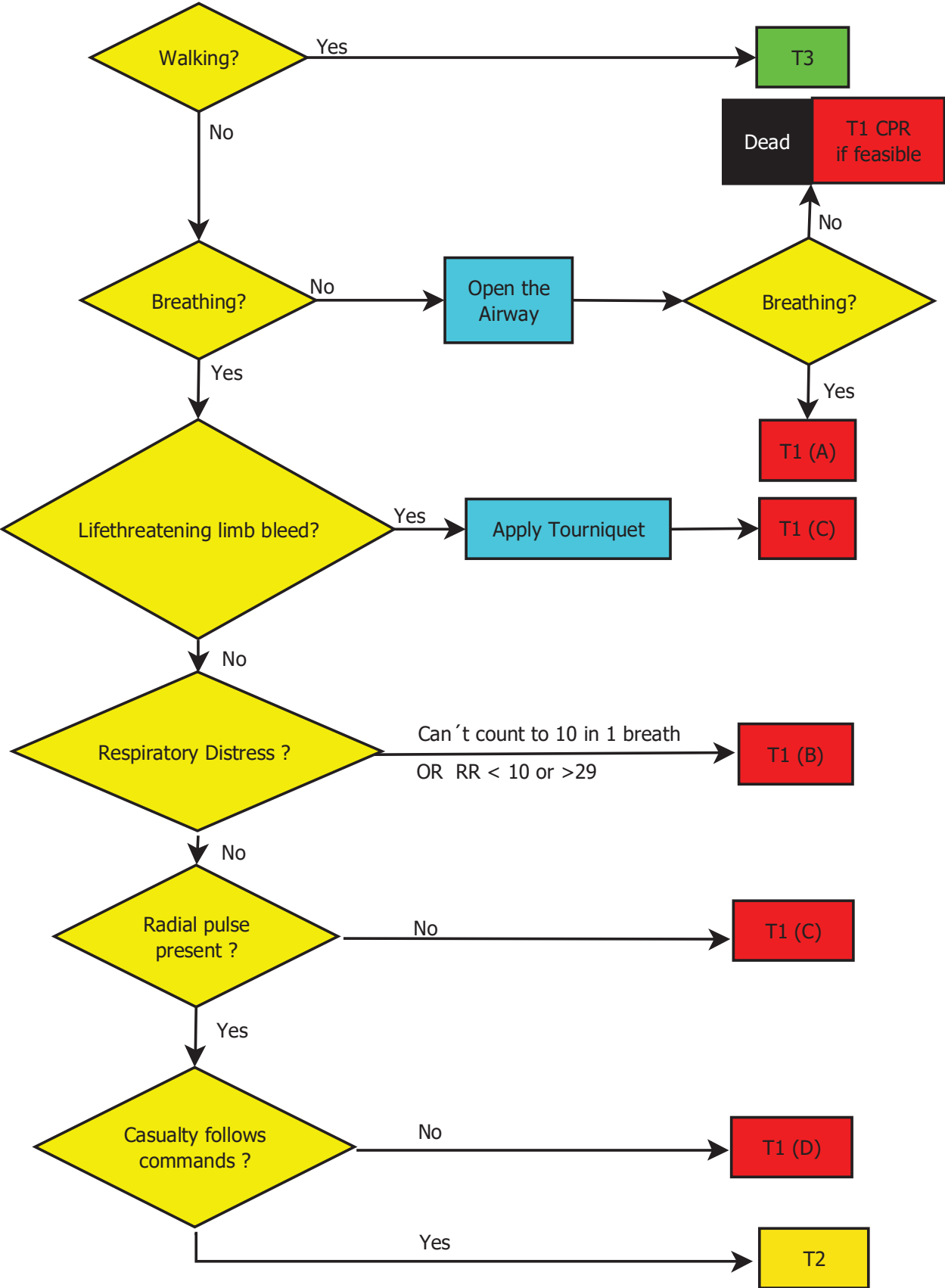
1

Algorithm





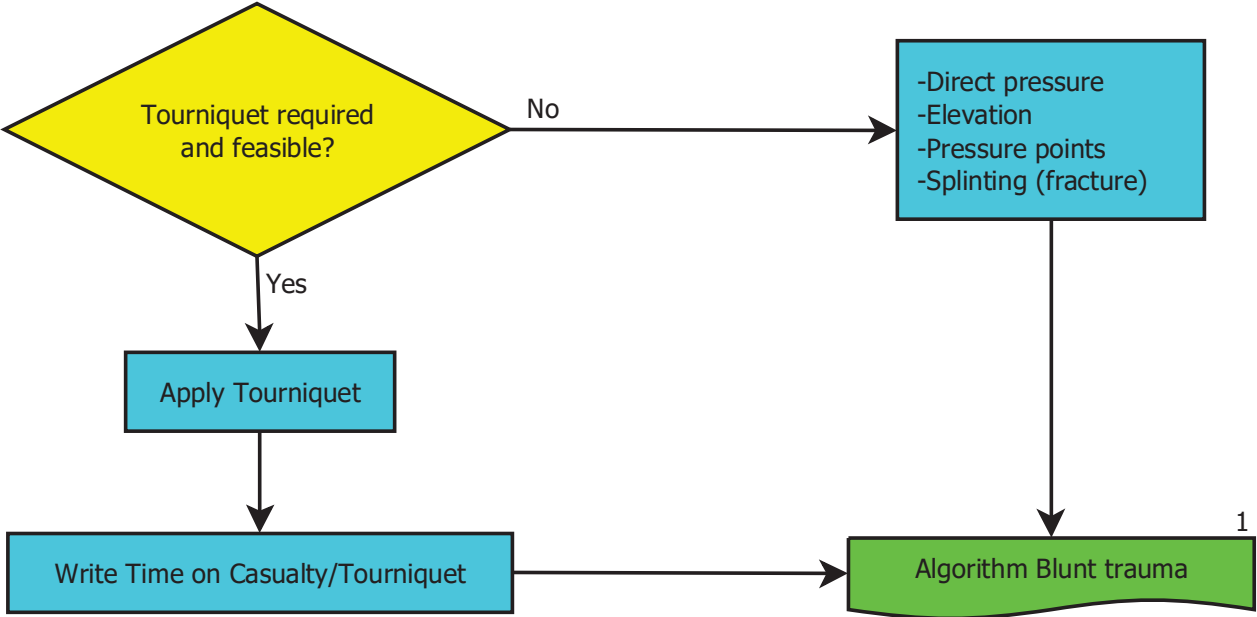
Triage



Asses and treat each individual casualty.
Start with T1 (A), then T1 (B), T1 (C), T2, T3

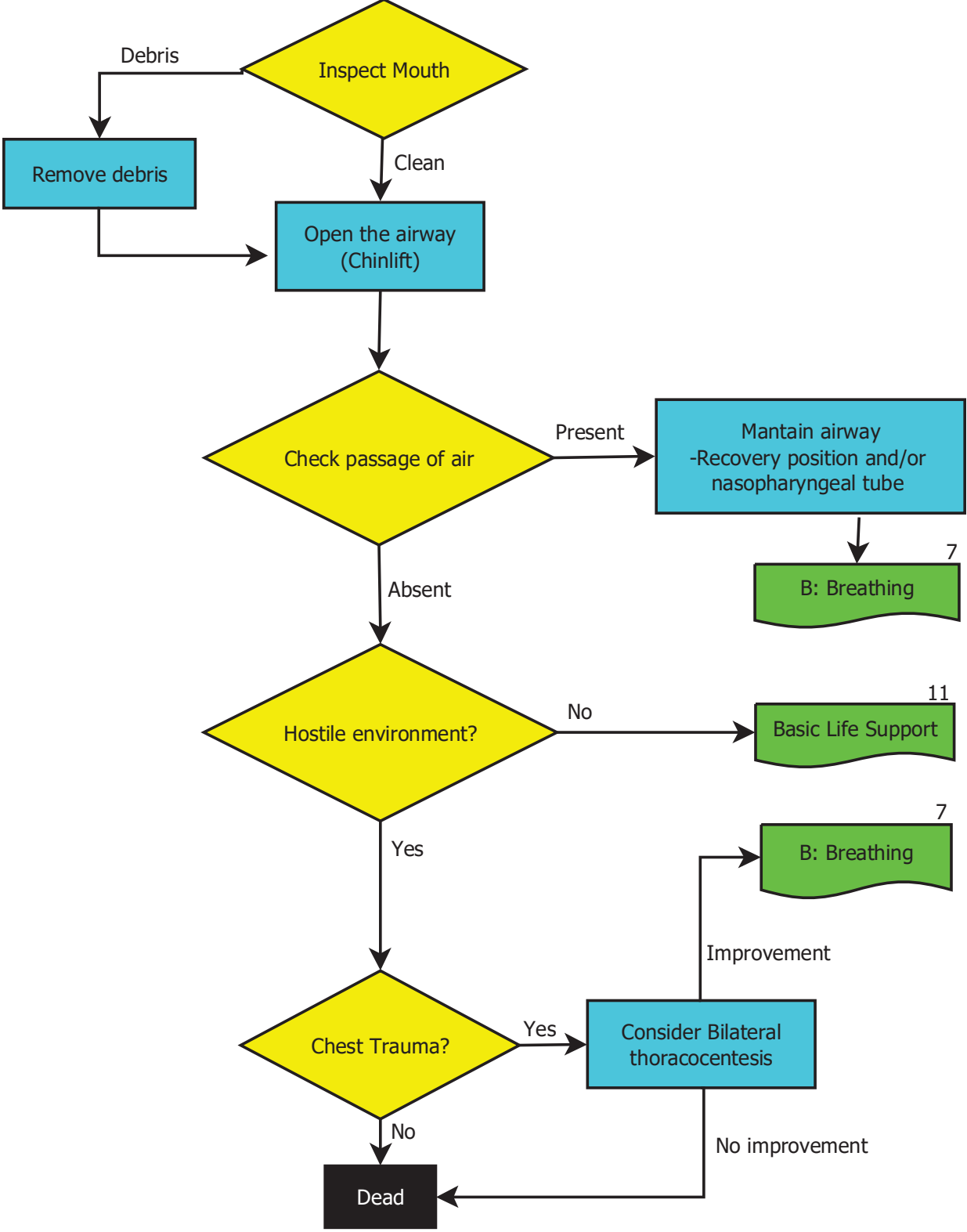
4

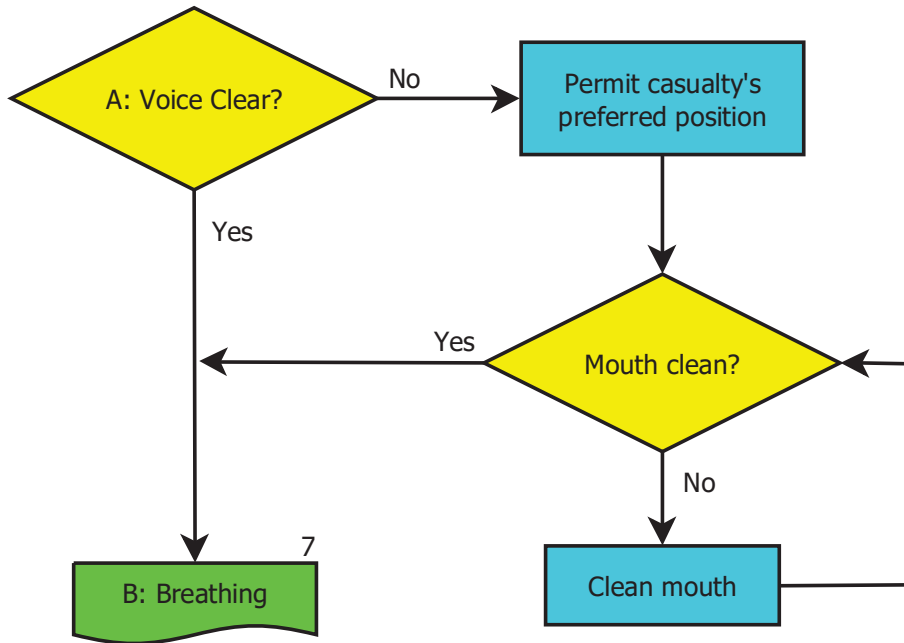
<c> Protocol Catastrophic Bleeding



5

Unconscious Casualty





7

B: Breathing

